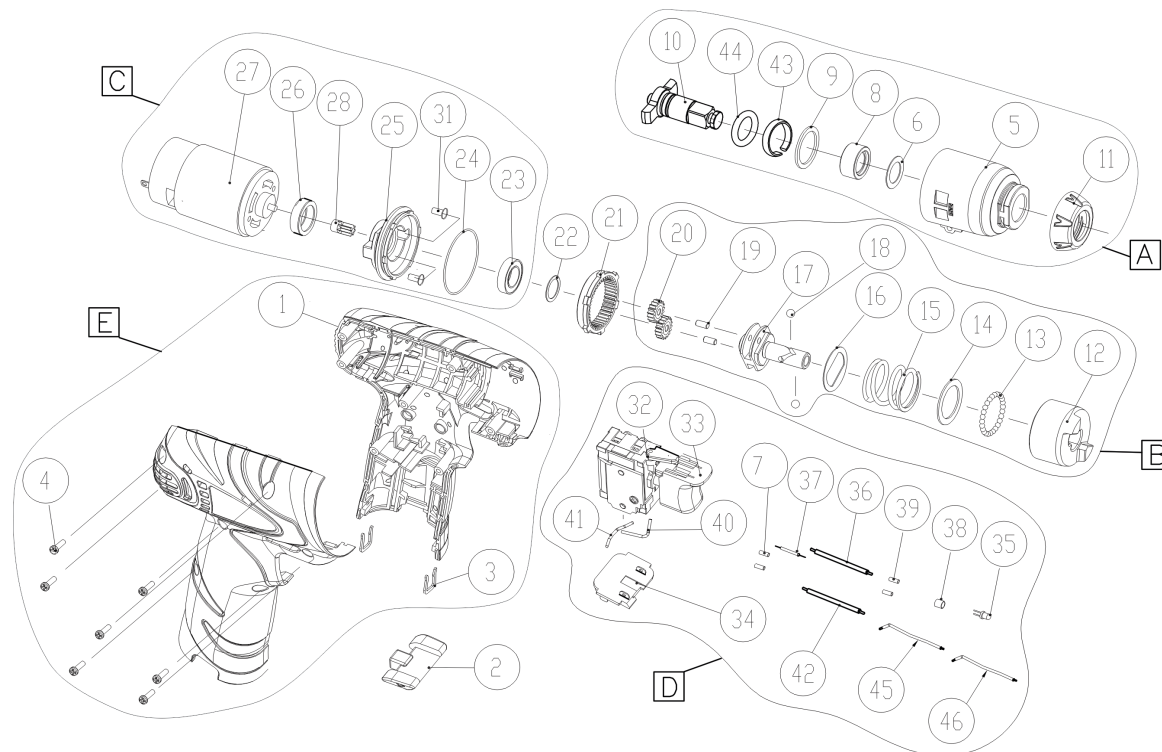


## ARI810 EXPLODED DIAGRAM



Item	Description	Ordering #	Q'ty	Item	Description	Ordering #	Q'ty
<b>A.</b>	<b>Hammer Case Assembly {5. 6. 8. 9. 10. 11. 43. 44}</b>	<b>ARI810-PA</b>	<b>1</b>	26	Bushing	30630819	1
5	Front Cover	20230276	1	27	Motor	10430611	1
6	Washer	20031549	1	28	Pinion	21030611	1
8	Bushing	21330075	1	31	Screw	20930154	2
9	Buffer	30430139	1	<b>D.</b>	<b>Switch Set {7. 32. 33. 34. 35. 36. 37. 38. 39. 40. 41. 42. 45. 46}</b>	<b>ARI810-PD</b>	<b>1</b>
10	Anvil	21730494	1	7	Thermal Shrink Tube	10230145	2
11	Rubber Boot	30630696	1	32	Switch	10530262	1
43	C-Clip	20930790	1	33	Trigger	30630677	1
44	O-Ring	30530085	1	34	Terminal Holder	30230736	1
<b>B.</b>	<b>Gear Set {12. 13. 14. 15. 16. 17. 18. 19. 20}</b>	<b>ARI810-PB</b>	<b>1</b>	35	LED	00730031	1
12	Hammer	20130040	1	36	Wire	10030515	1
13	Steel Ball	20930087	25	37	Resistor	00010138	1
14	Washer	20031375	1	38	LED column	10930024	1
15	Spring	20830313	1	39	Thermal Shrink Tube	10230039	2
16	Washer	20031377	1	40	Wire	10030524	1
17	Spindle	21730371	1	41	Wire	10030376	1
18	Steel Ball	20930089	2	42	Wire	10030258	1
19	Shaft	21030543	2	45	Wire	10030414	1
20	Planet Gear	21030601	2	46	Wire	10030561	1
<b>C.</b>	<b>Motor Set {23. 24. 25. 26. 27. 28. 31}</b>	<b>ARI810-PC</b>	<b>1</b>	<b>E.</b>	<b>Enclosure Set {1. 3. 4}</b>	<b>ARI810-PE</b>	<b>1</b>
23	Ball Bearing	21230141	1	1	Enclosure	30031389	1
24	O-Ring	30530069	2	3	U-Ring	20030117	2
25	Motor Holder	20230351	1	4	Screw	20930333	6
2	Reversing Actuator	30731225	1	22	Washer	20031376	1
21	Ring Gear	21030600	1				